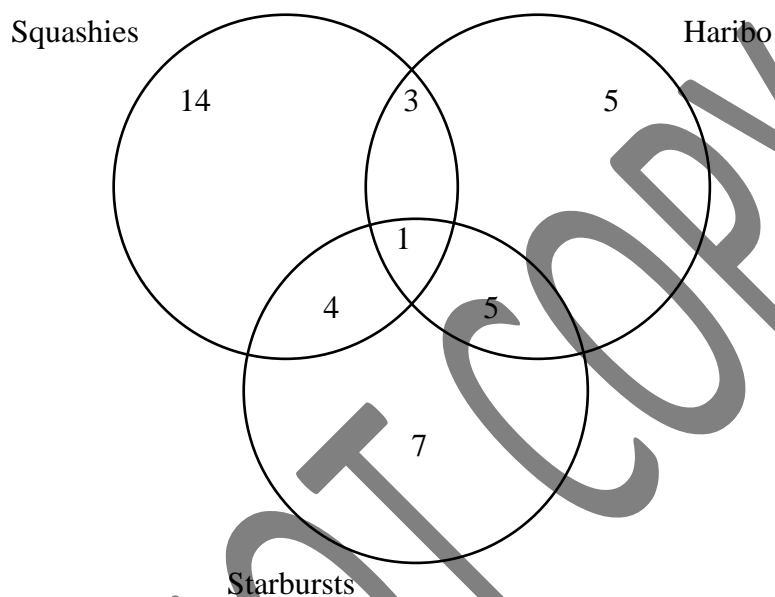


### Venn Diagram – Sorting Object Questions

1. Children attending a youth club are asked about **sweets** they like. Their answers are shown in the Venn Diagram below.



- (a) How many children **do not like Starbursts**? Write your answer in the space below.

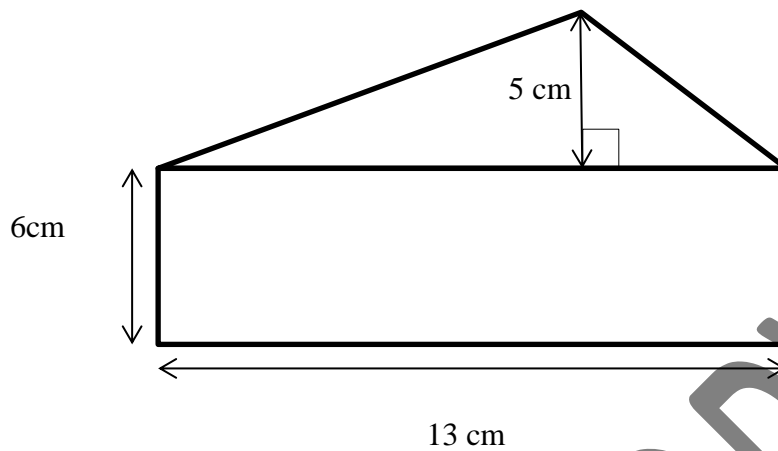
\_\_\_\_\_

- (b) How many children **like only Squashies and Starbursts**? Write your answer in the space below.

\_\_\_\_\_

\_\_\_\_\_

1. The **shape** below is made up of a **rectangle** and a **triangle**.

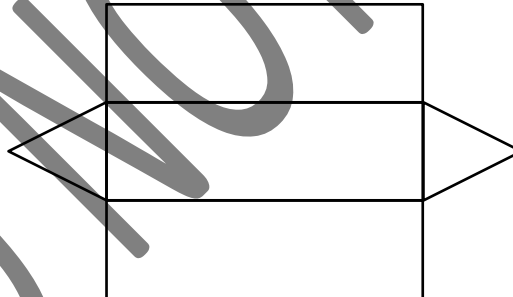


Calculate the **area** of this **shape**. Write your answer in the space below.

\_\_\_\_\_ cm<sup>2</sup>

---

2. Look at the **net** of the triangular prism below. It is made up of **3 rectangles** and **2 equilateral triangles**. The **length** of the side of each **rectangle** is **12.5 cm** long and the **width** of each **rectangle** is **4 cm**. The **side** of each equilateral **triangle** is **4 cm** long.



What is the **perimeter** of the net? Write your answer in the space below.

\_\_\_\_\_ cm

What is the **total area** of **all the rectangular faces** of the triangular prism?

\_\_\_\_\_ cm<sup>2</sup>

---

### Equivalent Fraction Revision

1. The fraction below is **equivalent to**  $\frac{1}{4}$ . Write the **missing number** in the box below.

$$\frac{\boxed{\phantom{000}}}{48}$$

---

2. The pairs of fractions in (a) and (b) are **equivalent fractions**. Write the **missing numbers** in the boxes below.

a)  $\frac{3}{\boxed{\phantom{00}}} = \frac{24}{32}$

b)  $\frac{40}{55} = \frac{\boxed{\phantom{00}}}{11}$

---

3. Look at the four fractions below. Two of these fractions are equal to  $\frac{4}{9}$ . Circle these two fractions.

$\frac{15}{18}$

$\frac{8}{18}$

$\frac{18}{54}$

$\frac{20}{45}$ 

---